

# EASE FABtool installation

Use the FABtool to program your EASE blinds.

## Requirements

### Windows 10 computer

- REQUIRED
- To be sourced by fabricator

### Keypad



- OPTIONAL, but strongly advised
- To be sourced locally
- USB connection

### EASE dongle



- REQUIRED
- Supplied by Hunter Douglas
- USB connection

### QR-code scanner

Currently support models:

- Honeywell Xenon 1900/1910 series
- ZEBRA DS2208



- OPTIONAL, but for production environments strongly advised. *It is possible to enter a barcode using the keyboard, but is very time consuming*
- USB connection
- To be sourced locally

## Hardware setup

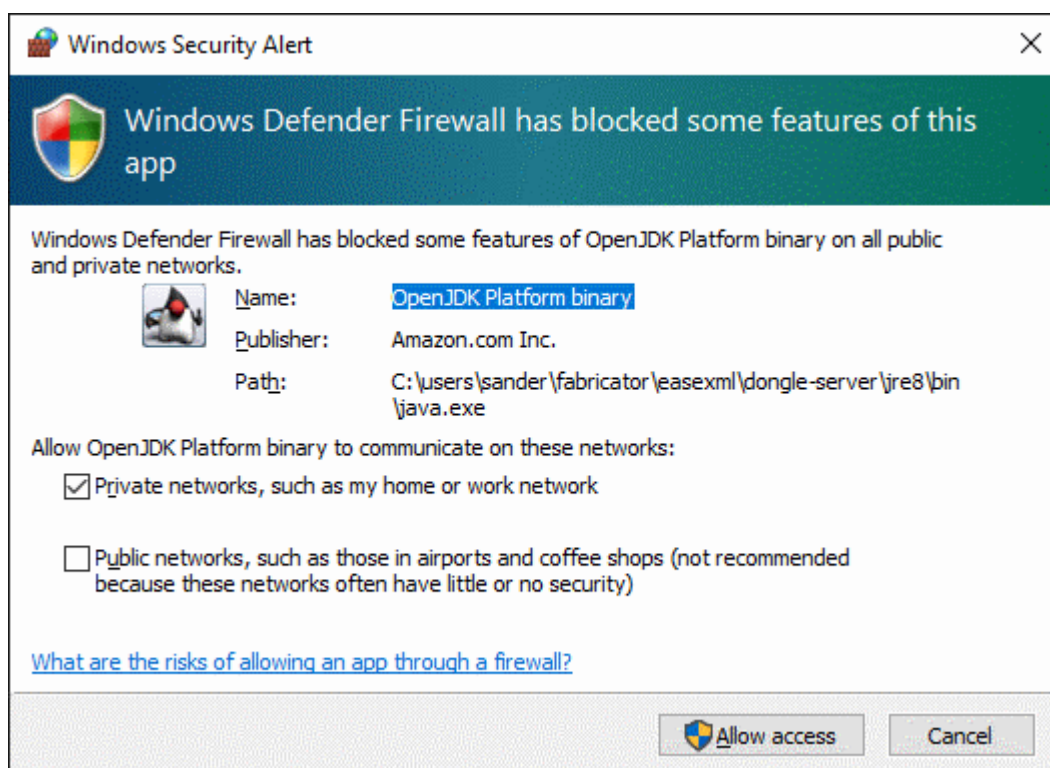
Before you run the tool make sure the above hardware is properly setup:

## Ease Dongle

1. Insert the dongle in one of the available USB ports on your computer.
2. Download the dongle windows driver from [here](#)
3. Extract the zip to your local machine.
4. In your setup go to `Device manager`
5. Select the hmip-dongle in the `Ports` list
6. Select `Update Driver` and choose the location where you extracted the downloaded driver.
7. Start the FABtool using the "EASE FABtool" icon .



8. While starting up the tool an extra window will open:



make sure `Private networks` checkbox is checked and click `Allow access` . (This only required once.)

If the above window does not appear AND the tool is unable to run properly go [here](#) for troubleshooting.

## QR code Scanner

1. Connect the scanner to your computer.
2. Depending on your scanner type, scan one of the below barcodes.

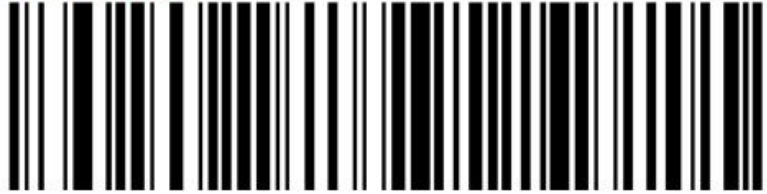
Honeywell Xenon 1900/1910  
series



TRMUSB130.  
**USB Serial**

ZEBRA DS2208

USB - CDC Host



Your scanner is now ready to be used.

## FABtool installation

1. Download the installation from the link below (Choose *latest* right under Download setup)

[fabtool installation](#)

2. Run the downloaded file and follow the instructions.

If you encounter the below message choose "More info" and click on the below button "Install Anyway".



The installation has finished. You can now run the tool and configure it to adapt it to your preferences:

1. Open the tool, navigate to the `File` menu and choose `Preferences` .
2. From there browse through the available options.